



FRANKE COMMERCIAL

EDUCATION FACILITIES

SINKS, FAUCETS, WASHROOM ACCESSORIES AND WATER COOLERS

FRANKE



CONTENTS

Barrier-free options	04
Classroom sink solutions	05
Washino wash & play troughs	06
Vanity basins	09
Stainless steel hand wash sinks	09
Touch-free faucets	10
Touch-free soap dispensers	11
Rodan washroom accessories	12
Hand sanitizer dispensers & stands	13
Stand alone hand wash stations	13
Cafeteria solutions	14
Janitorial solutions	16
Drinking fountains & bottle fillers	19



THE BENEFITS OF STAINLESS STEEL

Educational institutions have a unique set of requirements for their fixtures. Stainless steel is an ideal choice for this application group, here's why:

- Stainless steel is hygienic and easy to clean
- Stainless steel provides a smooth surface that resists dirt and bacteria
- Stainless steel is vandal-resistant
- Wall mount basins are easy to install and do not require expensive cabinets, counter tops or concealed arm carriers

We offer a wide range of sinks for any application, drinking fountains*, wash basins and accessories perfect for use in schools and educational institutions. Whether it is for the janitorial room or the cafeteria, equip your institution in stainless steel fixtures for worry-free maintenance.

*Drinking fountains offered in Canada only



GIVE EVERY CHILD ACCESS TO DRINKING WATER AND CONVENIENT HAND WASHING

THE SOLUTION: A SINK IN EVERY CLASSROOM

The US Centers for Disease Control and Prevention (CDC) recommends giving children **free access to water in schools**. Providing students with access to drinking water improves hydration and increases cognitive function.

Everyone loses water throughout the day from sweating and even breathing. It is important to provide ample opportunities for children to drink fluids when playing outside, indoors, and throughout the school day. Classroom sinks give children the opportunity to refill their water bottles at any time.

A sink in the classroom also allows students to wash their hands as needed: before and after eating, after blowing their nose, or handling shared materials in class. This is an essential step in infection prevention.



BARRIER-FREE OPTIONS FOR STUDENTS & STAFF

Franke Commercial offers universally accessible products for users of all abilities.

We believe that inclusive design can be beautiful and we manufacture accessible fixtures that can be seamlessly integrated into any application.

With over 50 sink models that meet ADA (Americans with Disabilities Act) requirements, there are options to suit most any space.

Find our electronically-activated faucets, soap dispensers, and paper towel dispensers for public and semi-public washrooms on the following pages.

Consult your local, regional, state, provincial, and national accessibility codes for further details on requirements.



STAINLESS STEEL CLASSROOM SINK SOLUTIONS

We have a complete range of over 40 different classroom sinks. Classroom sinks feature **multiple ledge configurations** to allow for the installation of both a faucet and drinking bubbler. Having a sink in class limits the need for students to leave the classroom to wash their hands or get a drink of water. Art Room Sinks are deep, hand fabricated topmount utility sinks for art rooms and laboratories.

1. Multiple Ledge Configurations

Franke offers 5 different ledge configurations.

Faucet ledges are available in multiple locations relative to the user, as if standing in front at the counter's edge. See below for overview of all ledge options.

2. Ledge for Drinking Bubbler

A bubbler ledge provides easy access to drinking water in class.

With a bubbler installed at the sink, students may easily refill water bottles. This reduces classroom disruptions since students can stay in the room to get a drink or refill their water bottle.

3. Soap Dispensers

Ledges are also commonly used for the installation of a soap dispenser.



4. Premium 18 Gauge Stainless Steel
Heavier gauge for more durability in busy environments.

The Classroom Range



*ALBLS4605P-1
*ALBLS4606P-1
LBLS4608P-1
*ALBLS6406P-1
LBLS6408P-1
*ALBLS7005P-1
*ALBLS7006P-1
LBLS7008P-1

*ALBRS4605P-1
*ALBRS4606P-1
LBRS4608P-1
*ALBRS7005P-1
*ALBRS7006P-1
LBRS7008P-1

*ALBLRS7005P-1
*ALBLRS7006P-1
LBLRS7008P-1
*ALBLRS7005P-1
*ALBLRS7006P-1
LBLRS7008P-1

*ALHS4605P-1
*ALHS4606P-1
LHS4608P-1
*ALHS6405P-1
*ALHS6406P-1
LHS6408P-1
*ALHS7305P-1
*ALHS7306P-1
LHS7308P-1
*ALHS8605P-1
*ALHS8606P-1
LHS8608P-1

*ALRS4605P-1
*ALRS4606P-1
LRS4608P-1

ART36-1
ART36-3C
ART48-1
ART48-3C
ART60-1
ART60-3C

TYPE 316 ART ROOM
ART36-316-1
ART36-316-3C
ART48-316-1
ART48-316-3C
ART60-316-1
ART60-316-3C



* Models with an asterisk are ADA-compliant sinks (5" or 6" deep)



WASHINO WASH AND PLAY TROUGHS

Their soft wave shapes and smooth surfaces make Franke Washino wash and play troughs beautifully suited for nursery schools and kindergartens. Their rounded shapes help reduce injury at the corners and make cleaning easy. The reduced front-to-back depth on the Washino allows little ones to belly up and easily reach the faucet.

Washino sinks are fabricated from durable MIRANIT (*for more on MIRANIT, see page 7*), have 2, 3 or 4 faucet holes and either a single or double basin. The double basin is available as a single mounting height or a two-level configuration. This gives younger children easier access for hand washing. The blue divider also allows for one side of the sink to be used for sensory play.

Washino sinks may be mounted at any height and make for an elegant hand wash sink for unisex washrooms in dormitories, universities, stadiums, and auditoriums.

Washino sinks include a standpipe for drainage and overflow, however, Franke recommends model #100 strainer to meet building code requirements.

MIRANIT: FRANKE'S COMPOSITE GRANITE MATERIAL

MIRANIT is a stable, impact-resistant compound consisting of 80% natural minerals such as marble powder, sandstone, and quartz sand bonded by high-quality unsaturated polyester resin. The final product is a non-porous, highly stable, and durable combination of these materials. Even water temperatures up to 80°C (176°F) will not harm the Alpine White gelcoat surface.

A graceful and clean appearance with built-in strength is what makes MIRANIT so unique. Specifically designed to meet the requirements of commercial and public sanitary facilities, this material has a smooth, high-gloss exterior finish.

Cut-away of MIRANIT material

Mineral material bonded by unsaturated polyester resin makes MIRANIT extremely durable and impact-resistant

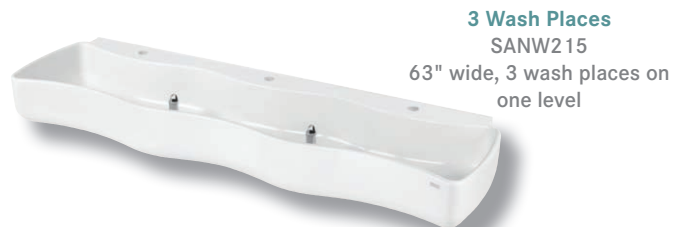


WASHINO: THE IDEAL KIDS' SINKS



2 Wash Places
SANW200

43" wide, 2 wash places on one level



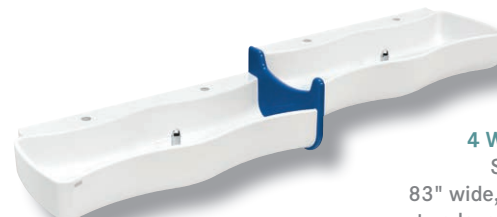
3 Wash Places
SANW215

63" wide, 3 wash places on one level



4 Wash Places
SANW211

83" wide, 4 wash places on two levels. Lower level on right hand side.



4 Wash Places
SANW212

83" wide, 4 wash places on two levels. Lower level on left hand side.



4 Wash Places
SANW205

83" wide, 4 wash places on one level



Pictured: RODX602E recessed paper towel dispenser & waste bin, WHB5222-7 dual station hand wash sink with optional shroud

STAINLESS STEEL: THE SMART CHOICE

Safety, vandal-resistance, and ease of maintenance are important considerations when designing school washrooms. This extensive range of stainless steel vanity basins and hand wash sinks ensures the right fit for just about any facility.

A smart alternative to vitreous china sinks, stainless steel sinks are hygienic, vandal-resistant, and easy to clean. Wall-mounted Franke Commercial sinks provide a reduction in labor costs by eliminating the need for expensive cabinets, countertops, and arm carriers.

Provide students, staff, and visitors with a hygienic washroom environment. Electronic faucets and soap dispensers ensure optimal hand hygiene by eliminating high touch surfaces. Franke can help you find the perfect solution for your project.



Vanity basins available in Canada only

STAINLESS STEEL VANITY BASINS



D Shaped Bowl with Faucet Ledge
V1619-5
16" x 19" x 5" deep
(Also available in 6" depth)



Oval
V1114-5
11" x 14" x 5" deep
(Also available in 6" depth)



Round
V17-5
17" round in 5" or 6" depth



Undermount
OV1317U-5
13" x 17" x 5" deep



D Shaped Bowl with Faucet Ledge
V1821-5
18" x 21" x 5" deep
(Also available 6" depth)



Oval
V1418-5D
14" x 18" x 5" deep
Available in 6" deep model



Round
OV17-5
17" round in 5" or 6" depth
with overflow



Undermount
OV1420U-5
14" x 20" x 5" deep

STAINLESS STEEL HAND WASH SINKS



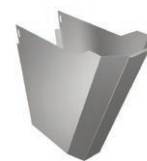
U-Shape Undermount
OWB1420U-5
14" x 20" (available with or without overflow)



Hand Fab Styling Undermount
WB1119-U-5
11" x 19" (available with or without overflow)



Wall Mount Dual Station Sink
WHB5222-7
52" x 22" x 7" deep
Two wash stations, elegant pyramid drain cover



Optional Shroud for Dual Station Sink
WHB5222-RS
Conceals plumbing on the WHB5222-7



Wall Mount Hand Wash Basin
WT400C-7
18" x 16" x 7" deep, no overflow
Available in 8" deep model with overflow



Small, Corner Wall Mount Hand Wash Basin
WT310E-7
12" x 12" x 7"
Maximize space in small washrooms



Wall Mount Vitreous Alternative
WHB2221-7
21" x 22" x 7" deep
Ideal retrofit for wall mount vitreous china sinks

TOUCH-FREE FAUCETS FOR HIGH TRAFFIC WASHROOMS

Engineered to be vandal-resistant for high traffic washrooms, Franke Aquarius faucets offer great looks with hands-free performance. Solid stainless steel construction, coordinated designs, available in polished chrome and satin finishes.




Wall Mount


Deck Mount, Angled


Deck Mount, Curved

3 STYLES OF AQUARIUS FAUCETS

- Stainless or satin finish
- AC or DC power
- 5 lpm/1.32 gpm or low flow option available 1.32 lpm/0.35 gpm







Aquarius touch-free faucets are made for use in high demand, heavy traffic areas, and:

- Have **plug-in (AC)** or **battery (DC)** power options
- Contain highly intelligent electronic controls
- Are manufactured from corrosion resistant Type 316 stainless steel
- Offered in a choice of two finishes: **satin or polished**
- Feature **laminar flow**
- Standard flow rate of 5 lpm /1.32 gpm
- **Low flow alternative (-LF)** at the rate of 1.32 lpm /0.35 gpm
- Certified to ASME A112.18.1/ CSA B125.1

Specifications for Aquarius faucets can be found on our website.






Optional handheld controller to program sensor ranges, run times, and automatic purging. Access helpful reporting features & download to a spreadsheet.
AC0 1-005

DESCRIPTION	SATIN FINISH FAUCET	HIGH POLISH FINISH FAUCET
Short, Wall Mount Faucet	 AT02-001AC AT02-001DC AT02-001AC-LF AT02-001DC-LF	 AT02-005AC AT02-005DC AT02-005AC-LF AT02-005DC-LF
Medium, Wall Mount Faucet	 AT02-011AC AT02-011DC AT02-011AC-LF AT02-011DC-LF	 AT02-015AC AT02-015DC AT02-015AC-LF AT02-015DC-LF
Long, Wall Mount Faucet	 AT02-021AC AT02-021DC AT02-021AC-LF AT02-021DC-LF	 AT02-025AC AT02-025DC AT02-025AC-LF AT02-025DC-LF
Short, Angled, Deck Mount Faucet	 AT03-021AC AT03-02DC AT03-021AC-LF AT03-02DC-LF	 AT03-023AC AT03-023DC AT03-023AC-LF AT03-023DC-LF
Long, Angled, Deck Mount Faucet	 AT03-011AC AT03-011DC AT03-011AC-LF AT03-011DC-LF	 AT03-013AC AT03-013DC AT03-013AC-LF AT03-013DC-LF
Short Neck, Deck Mount Faucet	 AT03-031AC AT03-031DC AT03-031AC-LF AT03-031DC-LF	 AT03-033AC AT03-033DC AT03-033AC-LF AT03-033DC-LF
High Neck, Deck Mount Faucet	 AT03-041AC AT03-041DC AT03-041AC-LF AT03-041DC-LF	 AT03-043AC AT03-043DC AT03-043AC-LF AT03-043DC-LF

ELECTRONIC SOAP DISPENSERS

Franke Aqua-Foam soap dispensers are perfect for busy school washrooms. Their hands-free operation eliminate high-touch surfaces and deliver the perfect amount of foam soap for effective hand washing.

			AQUA-FOAM SOAP DISPENSERS - Stainless or satin finish - AC power - Available as multi-feed option, where up to 6 dispensers can be fed from one 6L (1.6 gallon) tank
Wall Mount	Deck Mount , Pillar	Deck Mount, Curved	

Available in a satin finish or high polish stainless steel in three designs. Multi-feed option is available for Aqua-foam dispensers. Up to six dispensers can be supplied from a single 6 litre (1.6 gallon) tank. Connect a bank of soap dispensers to one tank for ease of maintenance and to save space under the counter.

- If the soap dispensers have not been activated in 48 hours, they will auto-dispense to prevent clogging.
- Requires supplied AC power to operate the soap dispenser.
- Uses foam soap only.

DESCRIPTION	SATIN FINISH	HIGH POLISH FINISH
Wall Mount Foam Soap Dispenser 	SD01-001SFL Multi-feed option SD01-001SFL-MF	SD01-001CFL Multi-feed option SD01-001CFL-MF
Deck Mount Foam Soap Dispenser 	SD01-002SF Multi-feed option SD01-002SF-MF	SD01-002CF Multi-feed option SD01-002CF-MF
Deck Mount, Curved Foam Soap Dispenser 	SD01-003SFL Multi-feed option SD01-003SFL-MF	SD01-003CFL Multi-feed option SD01-003CFL-MF
Multi-feed Soap Tank 6L/1.3gal 	SD01-MFT Ordered separately for use with multi-feed soap dispensers. Can feed up to 6 dispensers.	



A solid green light indicates the dispenser is on standby, ready to dispense soap.



Red lights provide maintenance alerts indicating wrong type of soap, motor failure, empty soap tank, or blocked sensor.



WASHROOM ACCESSORIES: THE RODAN SERIES

1. Sanitation Made Easy With Hygienic Stainless Steel

Sanitary fixtures that inhibit vandalism and are easy to clean help building operators to keep service and maintenance costs to a minimum.

Stainless steel is not only resistant to moisture and most acids, it also stands out due to its hardness, durability, high tolerance of heat and cold, and hygienic characteristics. Dirt and oil can easily be washed from the smooth, pore-free surface. Scratches and gouges on faceplates can be blended in to the surface.

3. Durable Stainless Steel

Stainless steel is the material of choice for products in public and semi-public washrooms.

This material is robust, easy to maintain, and durable, making Franke washroom accessories economical over the lifetime of the building.



2. Contemporary Design With Two Types of Mounting

With over 100 years of experience in stainless steel, Franke delivers coordinated solutions for commercial sanitary facilities.

These accessories provide the possibility of economical and aesthetic design for customized washrooms. Note the angular side profiles which lends itself to the contemporary décor of heavily frequented washrooms. Rodan offers recessed or surface mounting in several products.

The Rodan Range - a world of choice for high-traffic washrooms



Manual Foam & Liquid Soap Dispensers

RODX616
RODX618
RODX618E
RODX619
RODX619E



Electronic Soap & Sanitizer Dispensers

RODX627H
RODX625



Waste Bins

RODX602
RODX602E
RODX605
RODX605E
RODX611



Manual Paper Towel Dispensers

RODX600
RODX600E
RODX600ME



Electronic Paper Towel Dispensers

RODX630
RODX630E



Toilet Paper Dispensers

RODX672
RODX672E

STAND ALONE HAND WASH STATION

- Increased hand wash capacity
- Customize accessories for your space
- For entrances, lobbies, & common areas

HWS1821-I-3

Stand alone hand wash station for increased hand wash capacity

- Available with battery powered accessories such as a gooseneck faucet, soap dispenser, and paper towel dispenser
- Integrated waste bin
- Stainless steel backsplash for mounting paper towel dispenser
- Offset waste & 9" deep bowl complies with infection control guidelines
- Consult the Franke Commercial catalog for a complete list of available accessories



HAND SANITIZERS & SANITIZER STANDS

The ultimate in flexibility, place them in entrances, hallways, and common areas. Franke sanitizer stands bring durability and hand hygiene together. A small footprint and elegant design, perfectly paired with Rodan touch-free disinfectant dispensers.



RODX627H Rodan Electronic Disinfectant Dispenser

- Wall mount assembly
- Touch-free, infrared sensor activation
- 800 ml capacity tank
- Battery operated



RODX627H-STD36
Sanitizer Stand



RODX627H-STD37
Sanitizer Slim Stand

SANITIZER STANDS

- An elegant and durable alternative to plastic sanitizer stands that stand up to high-traffic and harsh environments
- Durable, robust stainless steel
- Drip tray catches excess
- Accommodates almost any wall mounted sanitizer dispenser, however Franke Commercial recommends RODX627H for school applications
- 60" overall height, dispenser height is 49"
- Due to the height of the dispenser, these stands are recommended for middle schools and secondary schools.



CAFETERIA SOLUTIONS

Multiple compartments and non-corrodible metal are the recommended sinks for food safe practices in Canada. As shown in the FS (Food Services) Code following, multiple bowls are preferred for the three stages of sanitation. The FS Code also recommends drainboards where possible to allow for air drying - where time permits.

Not only is a non-corrodible material recommended but it must contain a minimum of 16% chromium. Franke meets these requirements and more.

Our RESTAURANT SERIES SCULLERY SINKS are fabricated of robust 16 gauge 18/10 stainless steel. This means it contains 18% chromium and 10% nickel. These sculleries are constructed with hygiene and food safety in mind. The radius coved bowl corners are easy to clean and there are no cracks or seams in which bacteria can collect and grow.

CUSTOM STAINLESS FABRICATION CAPABILITIES

If you can sketch it, we can build it. We will fabricate to your exact specifications. Whether you need a custom scullery or integrated sink with a countertop, call Franke for a quote.

For a more economical alternative to the all radius coved corners of the Restaurant Series, see Classic Series in the Franke Commercial catalog or on the website.

Although the preceding information within this section is pertinent to British Columbia in particular, we feel the recommendations are sound advice throughout North America.





RESTAURANT SERIES SCULLERY SINKS



Single Bowl Restaurant Series

RSL2418-1
RSL2418L-1
RSL2418LR-1
RSL2418R-1
RSL2424-1
RSL2424L-1
RSL2424LR-1
RSL2424R-1



Double Bowl Restaurant Series

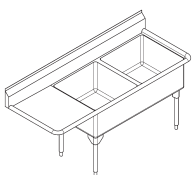
RDL2436-1
RDL2436L-1
RDL2436LR-1
RDL2436R-1
RDL2448-1
RDL2448L-1
RDL2448LR-1
RDL2448R-1



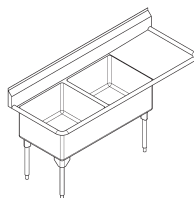
Triple Bowl Restaurant Series

RTL2454-1
RTL2454L-1
RTL2454LR-1
RTL2454R-1
RTL2472-1
RTL2472L-1
RTL2472LR-1
RTL2472R-1

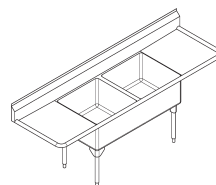
Drainboard Options for Service Series, Restaurant Series, World Class Series



Drainboard Left



Drainboard Right



Drainboards Left & Right



JANITORIAL SINK SOLUTIONS

The keepers of clean. Utility and janitorial spaces are a hub within any building, playing a key role in infection prevention. Tools, from mops to cloths to floor polishers make their way into multiple spaces - proper cleaning of these tools of the trade help to prevent the spread of infection. Franke offers a range of stainless steel sinks that provide a robust option for janitorial spaces. Choose Franke stainless steel sinks for a lifetime of service.

Products shown below represent a fraction of the range offered for janitorial and maintenance applications. Consult Franke Commercial catalog or website for more information.

CUSTOM STAINLESS FABRICATION CAPABILITIES
If you can sketch it, we can build it. From countertops to sinks, sculleries and mop sinks, we will fabricate to your exact specifications.



Single Bowl Scullery Sink, Easy Clean Radius Coved Corners
SL2424-1



Double Bowl Scullery Sink, Easy Clean Radius Coved Corners
DL2448-1



Wall-Mounted Service Sink, 14 Gauge, Easy Clean Radius Coved Corners
WSS6713



Wall-Mounted Service Sink, Type 316 Stainless
WHB1819-316-3

STAINLESS STEEL MOP SINKS

1. Versatile Installation

Can be installed in either LEFT or RIGHT corners.

This makes the mop sink extremely versatile. Should the need arise to renovate, this sink will install against any corner.

2. Integral Walls

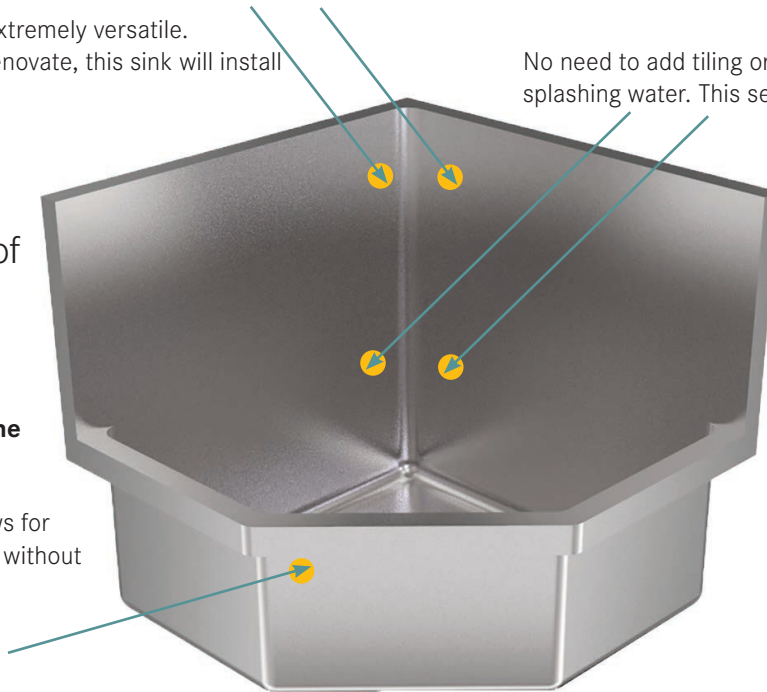
Both a backsplash and side splash are built right into the design.

No need to add tiling or additional materials to catch splashing water. This seamless design feature makes cleaning a breeze.

3. Easy Dumping of Dirty Water

Power driven floor cleaning equipment can be easily dumped into the sink.

The lower front panel allows for easy access into the basin without lifting over a high ledge.



FSS2210-316-1 shown

4. Durable

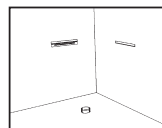
Stainless steel construction.

This alternative to solid surface mop sinks means there is no chance of chipping or cracking. 16 gauge, type 316 stainless steel resists corrosion and stands up to the rigors of the janitorial room, machine shop, or maintenance room.

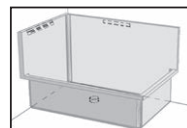
5. Quick to Install

Two wall carriers support the mop sink.

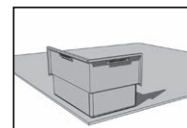
The diagrams below show the location of wall carriers and the floor drain. Quick and easy to install. The sink includes a 2" IPS grid shower drain.



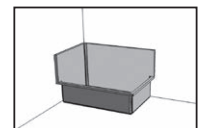
Prepare wall with supplied carriers



View from front indicating location of carriers and drain



View from behind showing mop sink installed



View from front showing mop sink installed

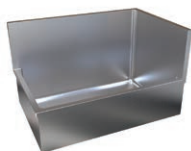
Floor mount mop sink models

Left corner mount



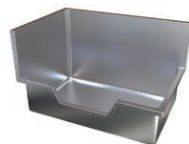
FSSL223410-316-1

Right corner mount



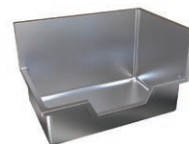
FSSR223410-316-1

Left corner mount
Low front



FSSOL223410-316-1

Right corner mount
Low front



FSSOR223410-316-1

Corner mount



FSS22210-316-1

Franke Commercial has full custom capabilities. We can manufacture stainless steel mop sinks, utility sinks, countertops, and scullery sinks to your exact specifications. Contact us today for a quote.



DRINKING FOUNTAINS AND BOTTLE FILLERS

How Drinking Water Improves Learning

When we are thirsty, mental performance - including memory, attention and concentration - can decrease by about 10 percent.¹



Children are better able to concentrate when they're not distracted by the effects of dehydration which can include thirst, tiredness, and irritability. Adequate hydration can aid in behaviour management by settling students in the classroom - good news for teachers, classmates, and parents alike. "Children will achieve more when both their health and learning needs are met. Ensuring free access to water and promoting a regular water intake throughout the school day is a vital role for schools in promoting health and providing a healthy learning environment."¹

Studies have shown that dehydration in teens and children results in restlessness, decreased alertness, dizziness, agitation and confusion. Memory, attention, and concentration are also negatively affected by dehydration.² Installing fountains and bottle fillers allows students free and easy access to fresh drinking water throughout the day.

1. Findings from a study called, WATER IS COOL IN SCHOOL campaign conducted by Education and Resources for Improving Childhood Continence (ERIC), in conjunction with the Royal College of Paediatrics and Child Health, UK. 2011.

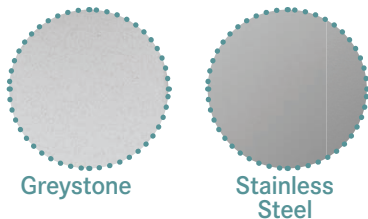
2. Findings published in *Nutrition in Clinical Care*, Vol. 64. HYDRATION AND COGNITIVE FUNCTION IN CHILDREN, D'Anci, K.E., Constant, F., Rosenbergt, I.H. 2006.

FRANKE DRINKING FOUNTAINS - THE RELIABLE CHOICE FOR FRESH DRINKING WATER

1. The Best of Both Water Options

REFRESHING FOUNTAIN WATER + BOTTLE FILLER

The bottle filler alcove and activation button contain Freshield®, which utilizes a silver based antimicrobial compound. This is ideal for work-place settings, schools, university locations, and any public building.



3. Greystone or Stainless Steel Cabinet Options

Although not every model is available in a choice of two cabinet finishes, both are extremely durable.

Stainless Steel Bowls are standard on all models. Cabinets are available in Stainless Steel or on many models in a Greystone finish.

Greystone Powder Coating on galvanized steel gives our product significantly greater durability, which translates into lower life cycle cost. The coating, a mixture of finely ground particles of pigment and resin, is sprayed and baked on for complete coverage and strong adhesion.

The finish resists cracking, corrosion, scratches, fading, impact and abrasion.



2. Hands-Free Options

The fountain and bottle fillers may be ordered in the touchless, hands-free options. The **Bottles Saved** indicator on the electronic bottle filler

(KEPWEBF) changes the count each time a minimum of 250 ml of water is dispensed.

A **Filter Status** indicator on the electronic bottle filler changes colour when it is time to replace the

filter cartridge.

The universal fountains are available as single or **split level** units (as pictured). The split level units can be mounted with the bottle filler on either drinking fountain, with the lower fountain on the right or left hand side to suit the application.

4. Feature Choices

- Electronic eye activation models for bottle fillers and drinking fountains
- Push pad activated drinking fountains available
- Vandal-resistant models
- Barrier free models
- Wall mount or floor models
- With or without chillers, either installed within wall cavity or remotely located
- Single or double for both child and adult mounting heights



Franke Drinking Fountains & Bottle Fillers
Available in Canada Only



Available in Canada Only

DRINKING FOUNTAINS & BOTTLE FILLERS

COMBINATION FOUNTAINS



Counter indicates number of plastic water bottles diverted from landfill



Electronic: Chilled/Unchilled
KEPACSL-EBF-GRY(STN)
KEP8ACSL-EBF-GRY(STN)



Touchless: Chilled/Unchilled
KEPACSLT-EBF-GRY(STN)
KEP8ACSLT-EBF-GRY(STN)



Chilled/Unchilled
KEPAC-EBF-GRY(STN)
KEP8AC-EBF-GRY(STN)



Vandal-Resistant
KEPVAC-SBF(EBF)-STN
KEPV8AC-SBF(EBF)-STN

BOTTLE FILLERS



Stand Alone
KEPWMSBF-STN



Stand Alone (electronic activation)
KEPWMEBF-STN



KEMWSMEBF-STN

CLASSIC, FREE-STANDING



KEP3CP-GRY(STN)
KEP5CP-GRY(STN)
KEP10CP-GRY(STN)

UNIVERSAL FOUNTAINS



Vandal-Resistant
KEPV8AC-STN



Chilled/Unchilled
KEP8AC-STN
KEPAC-STN



Touchless Chilled/Unchilled
KEP8ACT-STN
KEPACT-STN

MODULAR FOUNTAINS



Vandal-Resistant
KEM110PM

UNIVERSAL SPLIT LEVEL FOUNTAINS



Vandal-Resistant
KEPV8ACSL-STN



Chilled/Unchilled
KEP8ACSL-GRY(STN)
KEPACSL-GRY(STN)



Touchless Chilled/Unchilled
KEP8ACSLT-GRY(STN)
KEPACSLT-GRY(STN)



Greystone
(GRY)



Stainless Steel
(STN)



MORE TO DISCOVER FROM FRANKE COMMERCIAL



HEALTHCARE PLUMBING FIXTURES & ACCESSORIES

For hospitals, clinics, doctors' offices, long-term care facilities, and healthcare-related facilities, choose Franke Commercial products for the utmost in infection prevention and hand hygiene.

Hand wash sinks and surgical scrub up stations for infection prevention, stand alone hand wash stations for field hospitals and vaccination clinics, as well as durable, design-coordinated washroom accessories.

RETURN TO WORK SAFELY WITH FRANKE HAND HYGIENE PRODUCTS

Welcome your employees, customers, clients, and the public back into your facility safely with Franke touchless products and accessories.

Eliminate high-touch surfaces by retrofitting your business with electronically-controlled faucets and accessories.

For organizations that serve vulnerable populations, we offer Ozo-flo faucets that use the disinfecting power of ozone to make hand washing safer.



SOLUTIONS FOR LONG-TERM CARE FACILITIES & NURSING HOMES

Franke Commercial offers universally accessible products for users of all abilities. We understand the needs of architects and designers working in the long-term care and nursing home field. That's why we offer over 50 sink models that meet ADA (Americans with Disabilities Act) requirements as well as infection control products to keep residents, staff, and visitors safe. Franke Commercial believes that inclusive design can be beautiful and provide accessible fixtures to seamlessly integrate into any application.





Franke Kindred Canada Ltd.
Commercial Systems
1000 Franke Kindred Road
Midland, ON L4R 4K9

www.franke-commercial.com

CANADA:

Tel 855-446-5663

Fax 866-227-3050

commercial-info.ca@franke.com

USA:

Tel 855-526-0503

Fax 866-440-2250

commercial-info.us@franke.com

Dimensions, designs and
fabrication are subject
to change.

Printed in Canada.

Franke Commercial
Education Facilities

#61895
04/21

FRANKE