



# Sustainability at Franke



Thank you for taking an interest in Franke's Sustainability journey! Let's bring you onboard.

### Quick access links



Sustainability Website



Contact Us

## Our strategy

Franke's Sustainability Strategy is focused on three pillars:

### ENVIRONMENT

REDUCING OUR LIFE-CYCLE IMPACT

- Climate and energy
- Resource Use and Circularity

### OUR EMPLOYEES

ENABLING, ENGAGING, AND EMPOWERING OUR EMPLOYEES AT ALL LEVELS

- Occupational Health and Safety
- Training and Education

### SOCIETY

BEING A GOOD CORPORATE CITIZEN

- Product Stewardship and Innovation

## Our standards





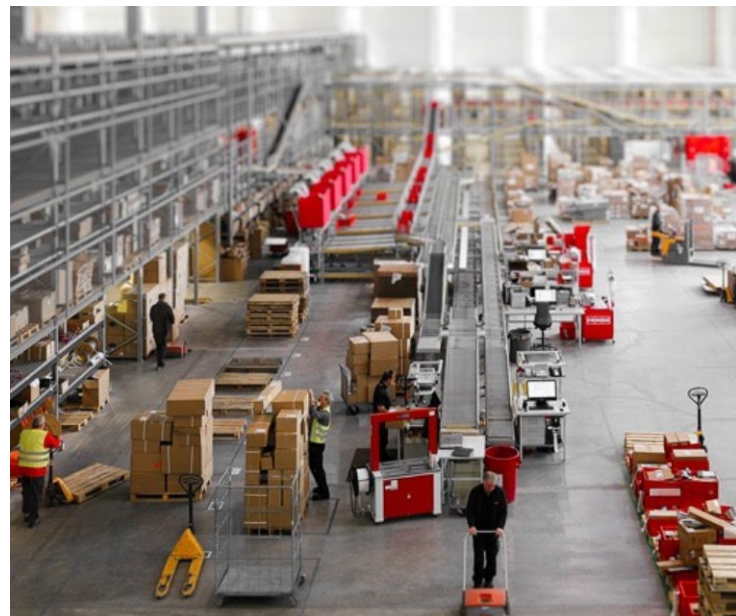
## Recent measures

- Validated our near-term and net-zero emission reduction targets with SBTi
- Completed our Double Materiality Assessment due to regulatory changes
- Improved our governance to include key points of contact for Sustainability topics in all of our business divisions
- Expanding our solar energy generation capacity
- Set Sustainability as an assessment criterion for investments

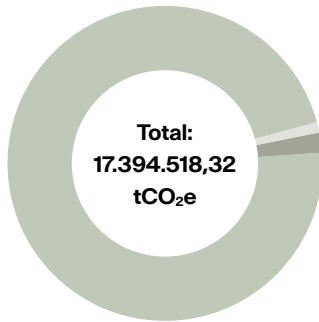


## Ongoing and upcoming initiatives

- Creating a plan for performing further Product Life Cycle Assessments (PLCAs) and publish Environmental Product Declarations (EPDs)
- Consolidating our warehousing and logistics with focus on efficiency
- In the early stages of implementing an ESG data management tool
- Beginning preparations for the Corporate Sustainability Reporting Directive (CSRD) and the Carbon Border Adjustment Mechanism (CBAM)



# Frequently asked questions (FAQ)



- Scope 1 (~0.08%):** 14.067,40 tCO<sub>2</sub>e
  - Scope 2 (~0.16%):** 27.152,00 tCO<sub>2</sub>e
  - Scope 3 (~99.76%):** 17.353.298,92 tCO<sub>2</sub>e
- Scope 1: Direct emissions.  
Scope 2: Indirect emissions.  
Scope 3: Upstream and downstream supply chain emissions.

## Emissions

### What are Franke's emissions?

<< Please refer to the image.

### What is the base year for the emission calculations?

2020.

### How does Franke calculate its emissions?

Franke uses a hybrid calculation method based on internal data as well as data from our suppliers collected via the Carbon Disclosure Project (CDP).



## Energy and materials

### Does Franke use renewable energy sources?

Yes, we annually generate 2,5 GWh of photovoltaic electricity and 4,9 GWh of heat using wood chips. Franke is actively looking to increase the share of renewable sources for its electricity wherever possible.

### Does Franke use recycled materials in its products?

Yes, 50% of the stainless steel we use is recycled. We are investigating more ways to increase the share of recycled materials in our products.



## Life cycle

### Is Franke packaging reusable or recyclable?

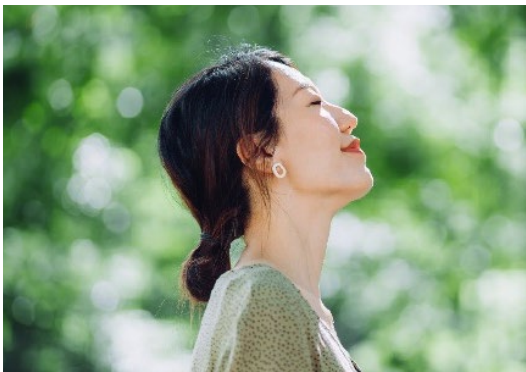
We are gradually changing our packaging from plastic-based to carton-based wherever possible. We also plan to implement reverse logistics processes to increase the reuse of packaging and pallets.

### Are the carbon footprints of Franke products known?

Currently, Franke has assessed the life cycle and footprint of key models of its coffee machines. More assessments are coming.

### Are Franke products repairable?

Whenever possible, Franke products are designed for easy maintenance and repair. Additionally, Franke has a large support team ready to help you make the best of Franke products and to extend their lifetime.



## Employees and society

### How does Franke conduct Human Rights due diligence?

Franke commits to sourcing responsibly and, as a Sedex partner, traces its supply chain, manages risks, and conducts thorough assessments.

### How does Franke give back to society?

Franke gives back to society by supporting charities with monetary and product donations, as well as partnerships. Volunteering opportunities close to our core business are also being developed.

### How does Franke engage with its employees?

Franke empowers its diverse people thanks to learning and development opportunities. Health, safety and wellbeing are also a key topic for us.

