

# WELCOME TO YOUR NEW FRANKE RANGEHOOD

You're about to begin a very happy and delicious  
relationship. Let's get started.

This is no ordinary rangehood.



**FDFPRO9354XSAU - 90CM T-SHAPE CANOPY RANGEHOOD**

MAKE IT WONDERFUL

**FRANKE**



### **AN IMPORTANT NOTE**

Please read this document and the safety information carefully before you first use your rangehood.

### **SUPPORT**

Speak to our customer service representatives.  
Australia: 03 9700 9100 | [info@prks.com.au](mailto:info@prks.com.au)  
New Zealand: 09 964 0400 | [info@prks.co.nz](mailto:info@prks.co.nz)

### **WARRANTY**

Your Franke product is protected by a 2-year warranty. Should you ever need to make a warranty enquiry, simply contact our service department.

Australia: 03 9700 9100 | [service@prks.com.au](mailto:service@prks.com.au)  
New Zealand: 09 964 0400 | [service@prks.co.nz](mailto:service@prks.co.nz)

### **GET SOCIAL**

Keep up to date on all things Franke by following us on Facebook and Instagram.

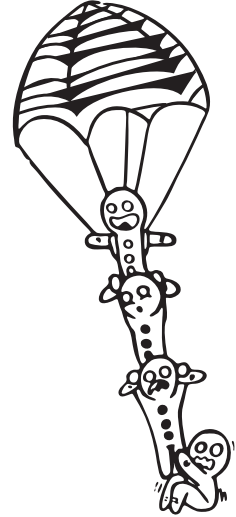
**@FrankeAUS**  
**#makeitwonderful**

"LET'S LET EVERYONE ELSE BE ORDINARY,  
WHILE WE MAKE IT WONDERFUL"

# CONTENTS

## Chapter 1: Ready, set up, go

- 5 Rangehood functions
- 6 First time use
- 6 Recommendations and suggestions
- 6 Installation instructions
- 11 Warnings and safety
- 11 Surrounding area information
- 11 Intended function
- 11 Environmental information
- 11 Disposal



## Chapter 2: Life with your Franke Rangehood

- 13 Operating your rangehood
- 13 Maintenance information
- 13 Cleaning metal shelf - supporting grease filters
- 13 Cooking information
- 13 Changing the filters

## Chapter 3: Getting the most out of your Franke Rangehood

- 15 Cleaning and care
- 15 Filter alarms
- 15 Interior lighting
- 15 Resetting the filter alarms
- 15 Use

## Chapter 4: Last, but not least

- 17 Warnings, hazards, risks and legal
- 17 Maintenance

## Looking for something?

- 18 Glossary

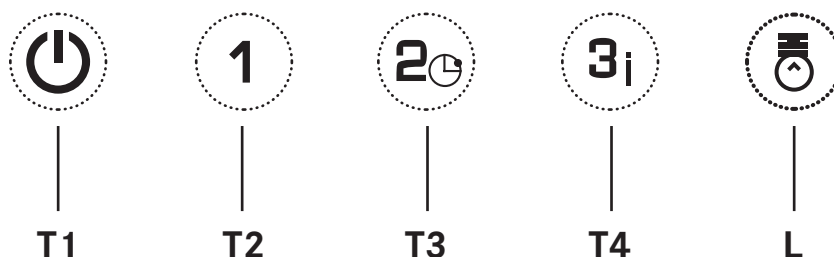
## CHAPTER 1



READY, SET UP, GO

Your Franke rangehood is designed to be set up quickly and easily - so you can start creating delicious masterpieces even sooner.

# RANGEHOOD FUNCTIONS



BUTTON	LED	FUNCTION
T1	-	Turns the motor off.
	All the LEDs flash 3 times.	When the filters alarm is triggered, the alarm can be reset by pressing and holding this button for approximately 5 seconds. These indications are only visible when the motor is turned off. When the procedure terminates, the indication shown previously turns off: <b>Led T2+Led T4 flash</b> , indicating the need to wash the metal grease filters. The alarm is triggered after the Hood has been in operation for 100 working hours. <b>Led T2+Led T3 flash</b> , indicating the need to change the activated charcoal filters, and to wash the metal grease filters. The alarm is triggered after the Hood has been in operation for 200 working hours.
T2	Fixed	Turns the motor on at speed one.
T3	Fixed	Turns the motor on at speed two.
	The LED corresponding to the speed that has been set flashes once every second	Turns the <b>Delay</b> Function on and off when pressed and held for 2 seconds. Activates automatic switch-off (Motor+Lights) with a 30' delay. Suitable to complete elimination of residual odours. Can be activated from any position when the <b>Intensive</b> function is disabled, and is deactivated by pressing the button or turning the motor off.
T4	Fixed	Turns the motor on at speed two.
	Flashes twice a second.	Turns the Intensive Function on and off when pressed and held for 2 seconds. This speed is timed to run for 6 minutes. At the end of this time, the system returns automatically to the speed that was set before. It is disabled by pressing the button or turning the motor off. It cannot be activated when the Delay function is active.
L	-	Turns the lighting system on and off at maximum intensity.
		Press and hold the button for approximately 5 seconds, with all the loads turned off (Motor and Lights), to turn the Activated Charcoal Filter alarm on/off.  <b>Led T3+Led T4 flash twice</b> – Alarm On. <b>Led T3+Led T4 flash once</b> – Alarm Off.



## FIRST TIME USE

When the rangehood is first switched on, it may give off an unpleasant smell. This is due to the bonding agent used for the insulation panels within the rangehood.

Run the rangehood on the highest setting for 15 minutes before using the rangehood with the cooktop on.

## RECOMMENDATIONS AND SUGGESTIONS

The Instructions for Use apply to several versions of this appliance. Accordingly, you may find descriptions of individual features that do not apply to your specific appliance.

## INSTALLATION INSTRUCTIONS

Check the appliance for damage after unpacking it, and don't connect the appliance if it has been damaged in transport.

**WARNING:** Failure to install the screws or fixing device in accordance with these instructions may result in electrical hazards.

Only a licensed professional may connect the appliance - damage caused by incorrect installation is not covered under the warranty. Ensure that the panels of the cabinetry around the rangehood are heat resistant, and the glues and materials can withstand temperatures of at least 70 degrees Celsius.

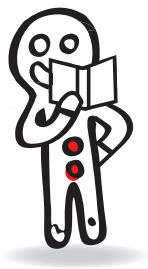
The air must not be discharged into a flue that is used for exhausting fumes from appliances burning gas or other fuels.

Before fitting the hood to the wall unit: Remove the filters, disconnect the wires, remove the frame by undoing the 4 screws on the outer edge.

The minimum distance between the supporting surface for the cooking vessels on the hob and lowest part of the range hood is 650mm.

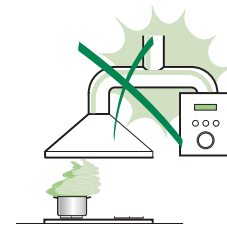
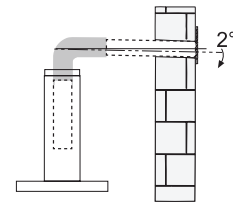
Connect the extractor to the exhaust flume through a pipe with minimum diameter of 120mm. Do not connect the extractor hood to exhaust ducts carrying combustible fumes.

Regulations concerning the discharge of air have to be fulfilled.



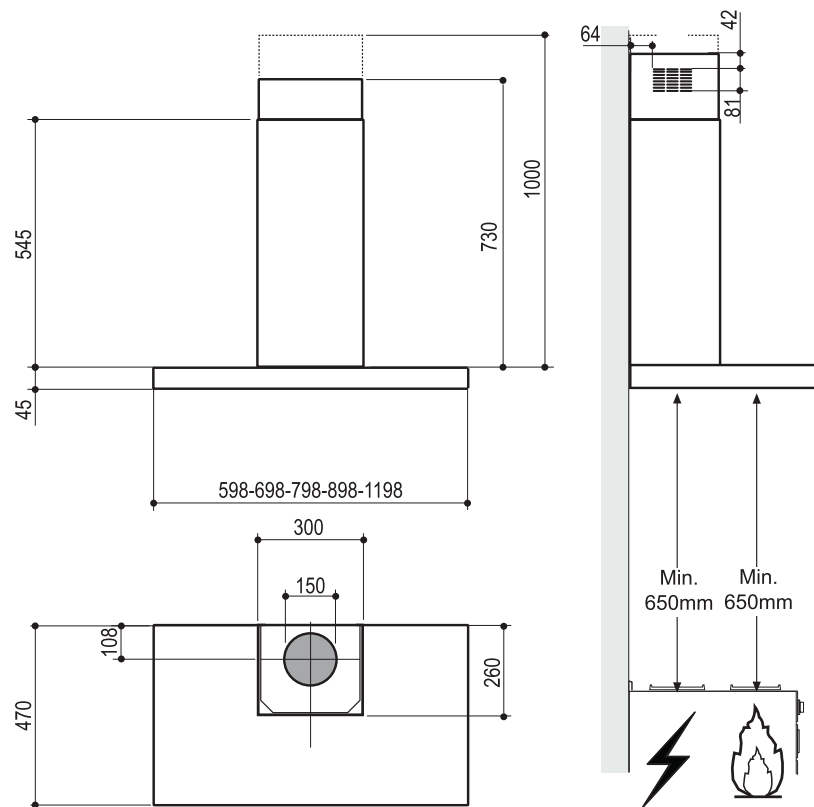
## INSTALLATION

- The manufacturer will not be held liable for any damages resulting from incorrect or improper installation.
- The minimum safety distance between the cooker top and the extractor hood is 650 mm (some models can be installed at a lower height, please refer to the paragraphs on working dimensions and installation).
- Check that the mains voltage corresponds to that indicated on the rating plate fixed to the inside of the hood.
- For Class I appliances, check that the domestic power supply guarantees adequate earthing. Connect the extractor to the exhaust flue through a pipe of minimum diameter 120 mm. The route of the flue must be as short as possible.
- Do not connect the extractor hood to exhaust ducts carrying combustion fumes (boilers, fireplaces, etc.).
- If the extractor is used in conjunction with non-electrical appliances (e.g. gas burning appliances), a sufficient degree of aeration must be guaranteed in the room in order to prevent the backflow of exhaust gas. The kitchen must have an opening communicating directly with the open air in order to guarantee the entry of clean air. When the cooker hood is used in conjunction with appliances supplied with energy other than electric, the negative pressure in the room must not exceed 0,04 mbar to prevent fumes being drawn back into the room by the cooker hood.
- The air must not be discharged into a flue that is used for exhausting fumes from appliances burning gas or other fuels (not applicable to appliances that only discharge the air back into the room).
- If the supply cord is damaged, it must be replaced by the manufacturer, its service agent or similarly qualified persons in order to avoid a hazard.
- If the instructions for installation for the gas hob specify a greater distance specified above, this has to be taken into account. Regulations concerning the discharge of air have to be fulfilled.
- Use only screws and small parts in support of the hood. Warning: Failure to install the screws or fixing device in accordance with these instructions may result in electrical hazards.
- Connect the hood to the mains through a two-pole switch having a contact gap of at least 3 mm.
- Allow disconnection of the appliance from the supply after installation. The disconnection may be achieved by having the plug accessible or by incorporating a switch in the fixed wiring in accordance with the wiring rules.



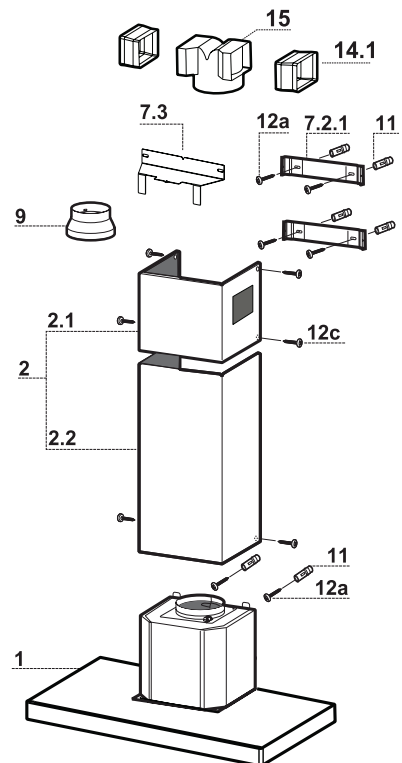
## CHARACTERISTICS

### DIMENSIONS



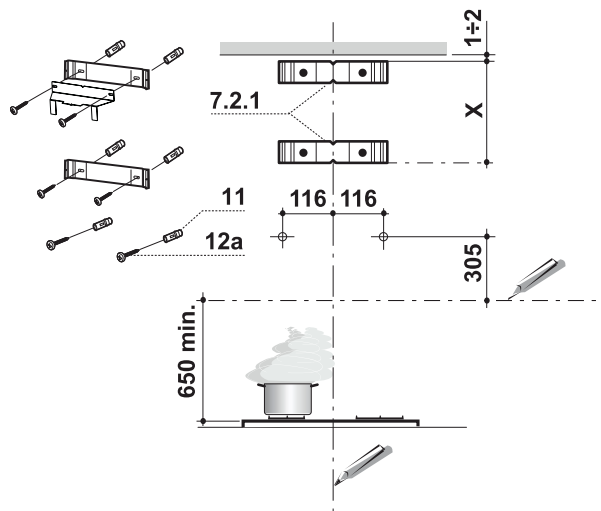
### COMPONENTS

Ref.	Qty.	Product Components
1	1	Hood Body, complete with: Controls, Light, Blower, Filters
2	1	Telescopic Chimney comprising:
2.1	1	Upper Section
2.2	1	Lower Section
9	1	Reducer Flange $\varnothing$ 150-120 mm
14.1	2	Air Outlet Connection Extension
15	1	Air Outlet Connection
Ref.	Qty.	Installation Components
7.2.1	2	Upper Chimney Section Fixing Brackets
7.3	1	Air Outlet Connection Support
11	6	Wall Plugs
12a	6	Screw 4.2 x 44.4
12c	6	Screws 2.9 x 9.5
Qty.	Documentation	
1	Instruction Manual	





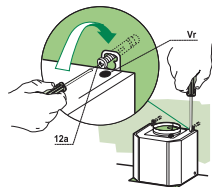
## Wall drilling and bracket fixing



### **Wall marking:**

- Draw a vertical line on the supporting wall up to the ceiling, or as high as practical, at the centre of the area in which the hood will be installed.
- Draw a horizontal line at 650 mm above the hob.
- Place bracket 7.2.1 on the wall as shown about 1-2 mm from the ceiling or upper limit aligning the centre (notch) with the vertical reference line.
- Mark the wall at the centres of the holes in the bracket.
- Place bracket 7.2.1 on the wall as shown at X mm below the first bracket (X = height of the upper chimney section supplied), aligning the centre (notch) with the vertical line.
- Mark the wall at the centres of the holes in the bracket.
- Mark a reference point as indicated at 116 mm from the vertical reference line and 305 mm above the horizontal reference line.
- Repeat this operation on the other side.
- Drill  $\varnothing$  8 mm holes at all the centre points marked.
- Insert the wall plugs 11 in the holes.
- Fix the lower bracket 7.2.1 using the 12a screws (4,2 x 44,4) supplied.
- Fix the upper bracket 7.2.1 and the air outlet connection support 7.3 together using the 2 screws 12a (4,2 x 44,4) supplied.
- Insert the two screws 12a (4,2 x 44,4) supplied in the hood body fixing holes, leaving a gap of 5-6 mm between the wall and the head of the screw.

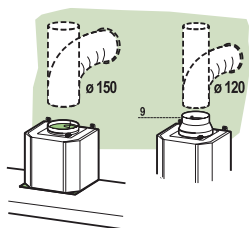
### **Mounting the hood body**



- Before attaching the hood body, tighten the two screws **Vr** located on the hood body mounting points.
- Hook the hood body onto the screws **12a**.
- Fully tighten the support screws **12a**.
- Adjust the screws **Vr** to level the hood body.

## Connections

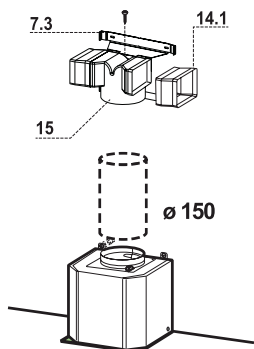
### DUCTED VERSION AIR EXHAUST SYSTEM



When installing the ducted version, connect the hood to the chimney using either a flexible or rigid pipe  $\varnothing$  150 or 120 mm, the choice of which is left to the installer.

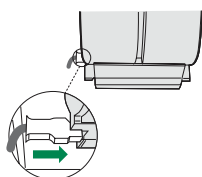
- To install a  $\varnothing$  120 mm air exhaust connection, insert the reducer flange 9 on the hood body outlet.
- Fix the pipe in position using sufficient pipe clamps (not supplied).
- Remove any activated charcoal filters.

### RECIRCULATION VERSION AIR OUTLET



- Insert the connection extension pieces laterally **14.1** in connection **15**.
- Insert the Connector **15** into the Support bracket **7.3** and fix it with a screw.
- Make sure that the outlet of the extension pieces **14.1** is horizontally and vertically aligned with the chimney outlets.
- Connect the air outlet connection **15** to the hood body outlet using either a flexible or rigid pipe  $\varnothing$  150 mm, the choice of which is left to the installer.
- Ensure that the activated charcoal filters have been inserted.

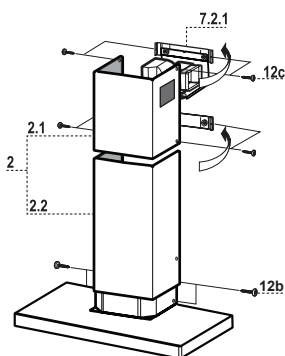
### ELECTRICAL CONNECTION



- Connect the hood to the mains through a two-pole switch having a contact gap of at least 3 mm.
- Remove the grease filters (see paragraph Maintenance) being sure that the connector of the feeding cable is correctly inserted in the socket placed on the side of the fan.

### Flue assembly

#### Upper exhaust flue



- Slightly widen the two sides of the upper flue and hook them behind the brackets **7.2.1**, making sure that they are well seated.
- Secure the sides to the brackets by using the 4 screws **12c** (2,9 x 9,5) supplied.
- Make sure that the outlet of the extensions pieces is aligned with the chimney outlets.

#### Lower exhaust flue

- Slightly widen the two sides of the flue and hook them between the upper flue and the wall, making sure that they are well seated.
- Fix the lower part laterally to the hood body by using the 2 screws **12c** (2,9 x 9,5) supplied.

## WARNINGS & SAFETY

- The appliance will become hot during use and directly after use.
- This appliance is not intended for use by persons (including children) with reduced physical, sensory or mental capabilities, or lack of experience and knowledge, unless they have been given supervision or instruction concerning use of the appliance by a person responsible for their safety.
- Children should be supervised to ensure that they do not play with the appliance.
- CAUTION: Accessible parts may become hot when used with cooking appliances.
- If any parts become damaged, they must be replaced by the manufacturer only, including the power supply cord.
- Do not use abrasive cleaners or sharp metal scrapers during cleaning.

## SURROUNDING AREA INFO

There must be sufficient air supply in the room in order to prevent backflow of exhaust gases. There shall be adequate ventilation of the room when the range hood is used at the same time as appliances burning gas or other fuels. The negative pressure in the room must not exceed 0.04mbar to prevent fumes being drawn back into the room.

## INTENDED FUNCTION

This appliance has been designed solely for use in domestic kitchens to eliminate foul smells, or a build up of cooking exhaust (smoke from cooking for example). Never use the hood for purposes which it was not designed for.

## ENVIRONMENTAL INFORMATION

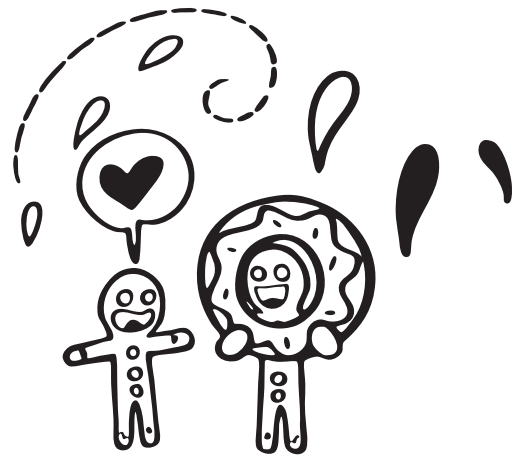
This Franke appliance is particularly energy efficient, however to make the most out of it, and to save even more energy make sure you adhere to the following steps:

1. It is more energy efficient to bake several items at the same time to avoid prolonged operation.
2. Only have the motor on setting 2 or 3, if setting 1 does not adequately vent the room.
3. Avoid leaving the light on for extended periods of time.

## DISPOSAL

Dispose of all packaging in an environmentally friendly manner. Franke practises environmentally conscious behaviour, and this appliance is labelled in accordance with the used electrical and electronic appliances waste guidelines.

If you have any questions on disposals, please call the Franke customer service team on 03 9700 9100.



## CHAPTER 2



# LIFE WITH YOUR FRANKE RANGEHOOD

We designed this rangehood with one thing in mind.  
How do we create a wonderfully simple user experience  
for **you**, our customer?

## OPERATING YOUR RANGEHOOD

To turn on the extractor motor function and choose your desired motor speed:

1. Press the desired motor speed setting (1,2 or 3). 1 will automatically be selected if you press the on/off button.
2. To turn off the rangehood, simply press the on/off button.
3. To operate the LED lamp, clicking the light button toggles the lamp on/off.

## MAINTENANCE INFORMATION

Before carrying out any maintenance of changing the filters, globes or cleaning the appliance, turn off or unplug the appliance from the mains to avoid electric shock.

## COOKING INFORMATION

Never leave high naked flames under the hood when it is in operation.

Do not flambé under the range hood.

Adjust the flame intensity to direct it onto the bottom of the pan only, making sure that it does not engulf the sides.

If the rangehood is used over a deep fryer, it must be continually monitored during use.

Do not spray oil directly onto an open flame or hot surface for risk of fire.

## CHANGING THE FILTERS

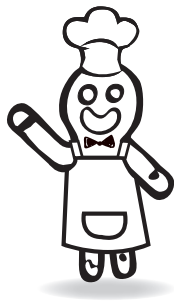
Change or replace the filters after the specific time period to avoid a clogging hazard.

Activated charcoal filters are not washable and can not be cleaned to be used again, and must be replaced every 4 months or more frequently during heavy use.

The grease filters must be cleaned every 2 months of operation or more frequently for heavy use. These can be placed in a dishwasher.

## CLEANING METAL SHELF - SUPPORTING GREASE FILTERS

- Remove the filters one at a time by pushing them towards the back of the group and pulling down at the same time.
- Wash the filters, taking care not to bend them. Allow them to dry before refitting.
- When refitting the filters, make sure that the handle is visible on the outside.



## CHAPTER 3



# GETTING THE MOST OUT OF YOUR FRANKE RANGEHOOD

Getting the most out of your Franke rangehood.  
Your Franke rangehood turns work into play, and  
inspires creativity every single day.

## CLEANING AND CARE

We want your Franke Appliance to be looking this good for a long time to come. To ensure that the various surfaces are not damaged through cleaning, please observe the following:

**Stainless steel:** Hot soapy water with a soft cloth

**Control panel:** Clean with a dish cloth and the dry with a soft cloth

**Filters:** A mix of hot soapy water and lemon juice. Wash with a dish cloth, and then allow to dry. Or place in the dishwasher.

WARNING: There is a risk of fire if cleaning is not carried out in accordance with the instructions.

## FILTER ALARMS

The grease filter has advanced sensors which warn the user when the filter needs cleaning or replacing.

The LED indicator lights up continually, it is a sign that the grease filter needs washing.

## INTERIOR LIGHTING

If the interior bulb or cover is defective for any reason or the light no longer operates, please call our service team for support.

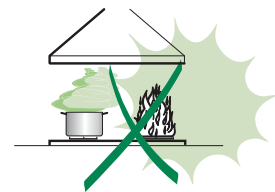
## RESETTING THE FILTER ALARMS

If the filters needs replacing, the alarm and LED lights up, once replaced or washed, to reset the alarm the following steps must be taken:

Hold the motor 3 speed button for 5 seconds until the LED flashes three times for confirmations.

## USE

- The extractor hood has been designed exclusively for domestic use to eliminate kitchen smells.
- Never use the hood for purposes other than for which it has been designed.
- Never leave high naked flames under the hood when it is in operation.
- Adjust the flame intensity to direct it onto the bottom of the pan only, making sure that it does not engulf the sides.
- Deep fat fryers must be continuously monitored during use: overheated oil can burst into flames.
- Do not flambè under the range hood; risk of fire.
- Children shall not play with the appliance. Cleaning and user maintenance shall not be made by children without supervision.
- This appliance is not intended for use by persons (including children) with reduced physical, sensory or mental capabilities, or lack of experience and knowledge, unless they have been given supervision or instruction concerning use of the appliance by a person responsible for their safety.
- Children should be supervised to ensure that they do not play with the appliance.



## CHAPTER 4



# LAST BUT NOT LEAST

This section contains the warnings, precautions and legal notices to make sure everything runs smoothly.



## ELECTRIC SHOCK HAZARD

Never carry out any repairs yourself, always get an authorized technician to do any repairs or maintenance on your rangehood. If any electrical components become damaged or there is exposed wiring, there is a risk of electrical shock.

If the supply cord is damaged, it must be replaced by the manufacturer, its service agent or similarly qualified persons in order to avoid a hazard.

Ensure whenever the rangehood is in operation and you come into contact with it, that appropriate footwear is worn.

## HAZARDS

The following is a comprehensive list of all hazards and risks this product possesses.

### Risk of burns:

- The appliance becomes very hot. Never touch any surfaces or compartments which has been exposed to the heating elements.
- Alcoholic vapours may catch fire. Never use a high quantity of alcohol in a cooking recipe.

### Risk of electric shock:


- The insulation and coating of rangehood accessories may cause electric shock if they come into contact with electrical components.

### Risk of death or serious injury to human health:

- The cables and wiring harnesses at the rear of the rangehood must not be tampered with or come into contact with the hot appliance.
- If the appliance is not operating correctly, do not continue to operate it. Discuss your problem with our customer service team.

## MAINTENANCE

- Switch off or unplug the appliance from the mains supply before carrying out any maintenance work.
- Clean and/or replace the Filters after the specified time period (Fire hazard).
- The Grease filters must be cleaned every 2 months of operation, or more frequently for particularly heavy usage, and can be washed in a dishwasher.
- The Activated charcoal filter is not washable and cannot be regenerated, and must be replaced approximately every 4 months of operation, or more frequently for particularly heavy usage.
- “Failure to carry out cleaning as indicated will result in a fire hazard”.
- Clean the hood using a damp cloth and a neutral liquid detergent.

The symbol  on the product or on its packaging indicates that this product may not be treated as household waste. Instead it shall be handed over to the applicable collection point for the recycling of electrical and electronic equipment. By ensuring this product is disposed of correctly, you will help prevent potential negative consequences for the environment and human health, which could otherwise be caused by inappropriate waste handling of this product. For more detailed information about recycling of this product, please contact your local city office, your household waste disposal service or the shop where you purchased the product.

## GLOSSARY

**Abrasive** - a coarse and harsh substance capable of polishing or cleaning a surface by rubbing or grinding.

**Buzzer** - a device that makes a loud noise and is used to signal something.

**Cabinetry** - a collection of cupboards with drawers or shelves.

**Circuit breaker** - and automatic device for stopping the flow of current in an electrical circuit for safety reasons.

**Insulation** - protecting or shielding an object from excessive heat or moisture.

**Licensed professional** - a person who has had the proper training and prerequisite to complete a certain job.

**Manufacturer** - the person or organisation which is the original producer of a product.

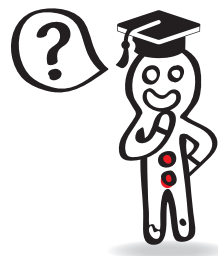
**Metal scraper** - a single edged tool used to scrape a surface clean.

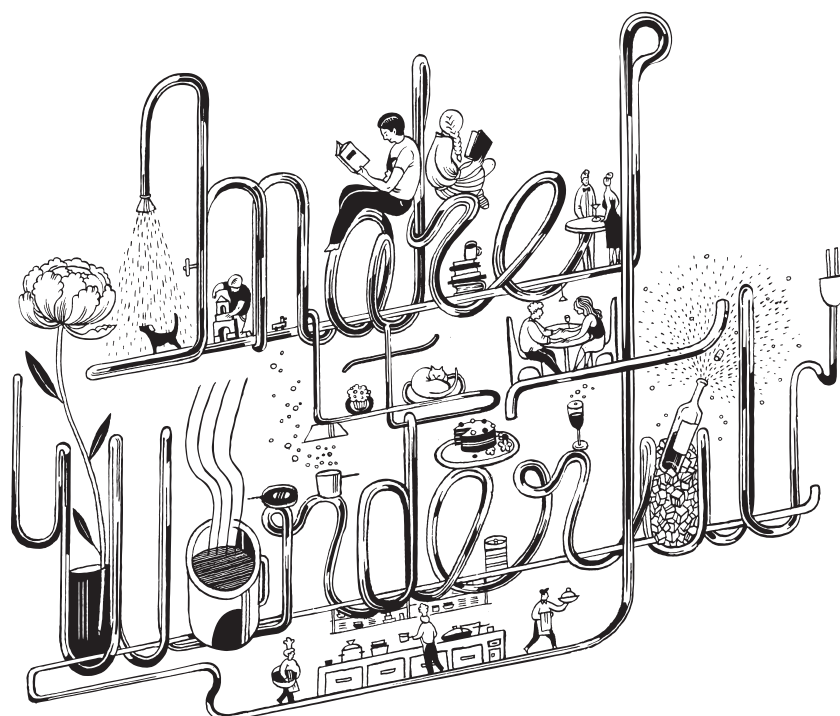
**Packaging** - the materials used to wrap or protect goods.

**Trouble shooting** - finding the causes of common problems.

**User experience** - the overall experience of a person using a product, in terms of how easy or pleasing it is to use.

**Warranty** - a written guarantee promising to repair or replace a product under certain circumstances within a certain time.





PR Kitchen & Washroom Systems  
83 Bangholme Road  
Dandenong South  
VIC 3175  
Australia  
Phone +61 3 9700 9100  
Fax +61 3 9700 9191  
info@prks.com.au  
www.franke.com.au

PR Kitchen & Washroom Systems NZ Ltd  
P.O Box 53171, Auckland Airport  
Auckland 2150  
New Zealand  
Phone 09 964 0400  
Fax 09 964 0401  
info@prks.co.nz  
www.franke.co.nz

