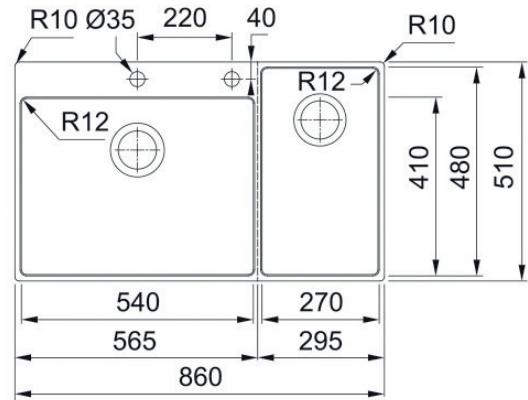


BOX CENTRE

BWX220-54/27SBR



PRODUCT INFORMATION

| | |
|-------------------------|--|
| Installation | Topmount/Flushmount |
| Dimensions | 860 x 510mm |
| Cabinet Base | 900mm |
| Bowl Size | 540 x 410 x 200mm/44L 270 x 480 x 200mm/26L |
| Bowl Radius | 12mm |
| Cut-Out Size | Template |
| Cut-Out Template | Yes |
| Waste Outlet | Semi Integrated Waste |
| Overflow | Yes |
| Tap Holes | ø35mm |
| Remote Waste | Yes |
| Finish | Stainless Steel |
| Warranty | 50 Years |

NOTE: Cut-out dimensions are a guide only, please use the actual sink as your template.

FEATURES & BENEFITS



Food Preparation Centre



18/10 Stainless Steel



Push Button Remote Waste



Sound Deadening Pads



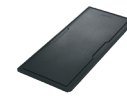
Hygienic Integrated Waste

ACCESSORIES

— Included Accessory
- - - Available Accessory



CB134
Chopping Board



CB120
Chopping Board



DB138
Wire Rack



KS792
Knife Set



CB135
Knife Holder



SBCUW-70S
Strainer Bowl



AC292
Stainless Steel Organiser



PB835
Push Button Waste



DT360
Extension Drainer

BARE SINK OPTION AND SOME SINK & TAP PACKAGES DO NOT INCLUDE ACCESSORIES. PLEASE CHAT TO YOUR SALES CONSULTANT FOR FURTHER INFORMATION.

LAST UPDATED: 21 SEPTEMBER 2021

FRANKE