

# MARIS

MRG260-34/15 SBL



MRG260-34/15 SBL MB

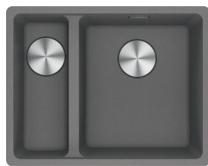
**NOTE:** Matte black waste included



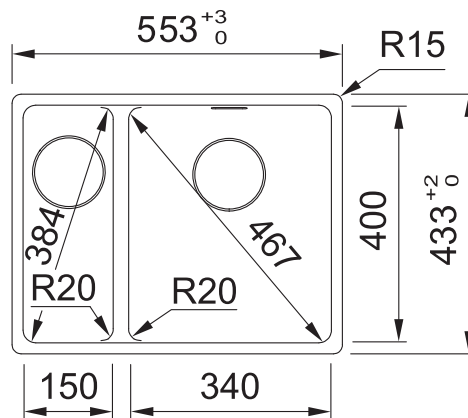
MRG260-34/15 SBL ON



MRG260-34/15 SBL PW



MRG260-34/15 SBL SG



## PRODUCT INFORMATION

<b>Installation</b>	Flushmount
<b>Dimensions</b>	553 x 433mm
<b>Cabinet Base</b>	600mm
<b>Bowl Size</b>	340 x 400 x 200mm / 27L 150 x 400 x 150mm / 8L
<b>Bowl Radius</b>	20mm
<b>Cut-Out Size</b>	Template
<b>Cut-Out Template</b>	Yes
<b>Waste Outlet</b>	Semi Integrated Waste
<b>Overflow</b>	Hidden
<b>Tap Holes</b>	No
<b>Remote Waste</b>	No
<b>Finish</b>	Fragranite
<b>Warranty</b>	50 Years

**NOTE:** Cut-out dimensions are a guide only, please use the actual sink as your template.

## FEATURES & BENEFITS



Food Preparation Centre



Fragranite



Hidden Overflow



Sanitized@ Surface

## ALL-IN ACCESSORIES (AVAILABLE)

<b>PACK 1</b>	<p>Telescopic Bridge Chopping Board Small Strainer Bowl Small Storage Box Bamboo Lid</p>
<b>PACK 2</b>	<p>All Accessories Included In Pack 1 + </p> <p>Silicon Drainer Mat</p>
<b>PACK 3</b>	<p>All Accessories Included In Pack 2 + </p> <p>Large Strainer Bowl Storage Container</p>

**ADDITIONAL ACCESSORIES** — Included Accessory - - - Available Accessory



**DT651**  
Extension Drainer



**DB448**  
Drainer Basket



**RM44**  
Rollamat

BARE SINK OPTION AND SOME SINK & TAP PACKAGES DO NOT INCLUDE ACCESSORIES. PLEASE CHAT TO YOUR SALES CONSULTANT FOR FURTHER INFORMATION.

LAST UPDATED: 24 JULY 2024

